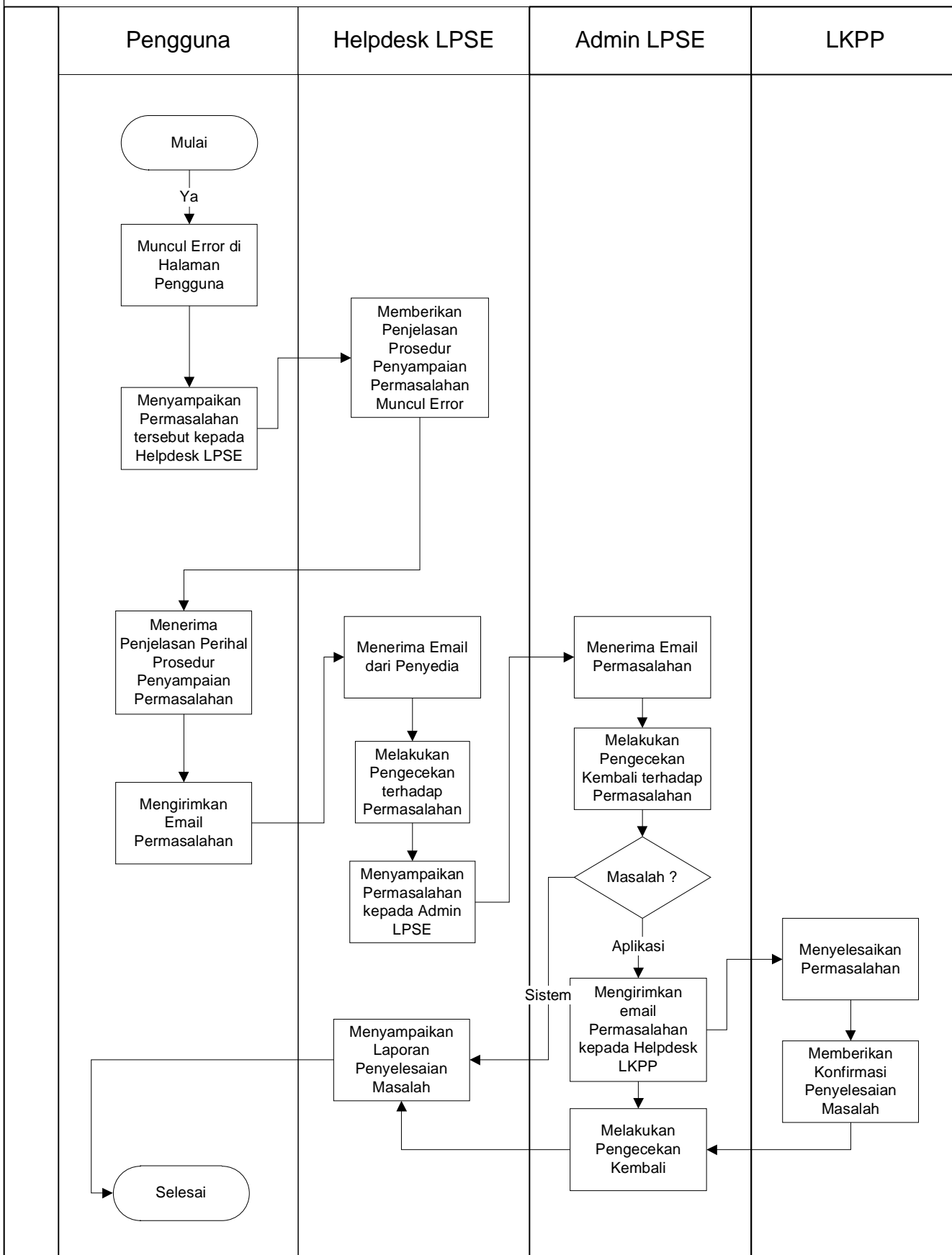
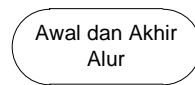
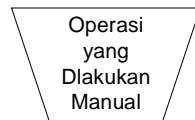
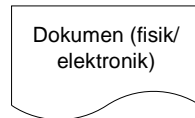
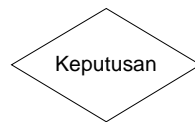
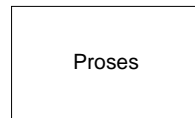


Penanganan Muncul Error di Menu Pengguna



Keterangan :

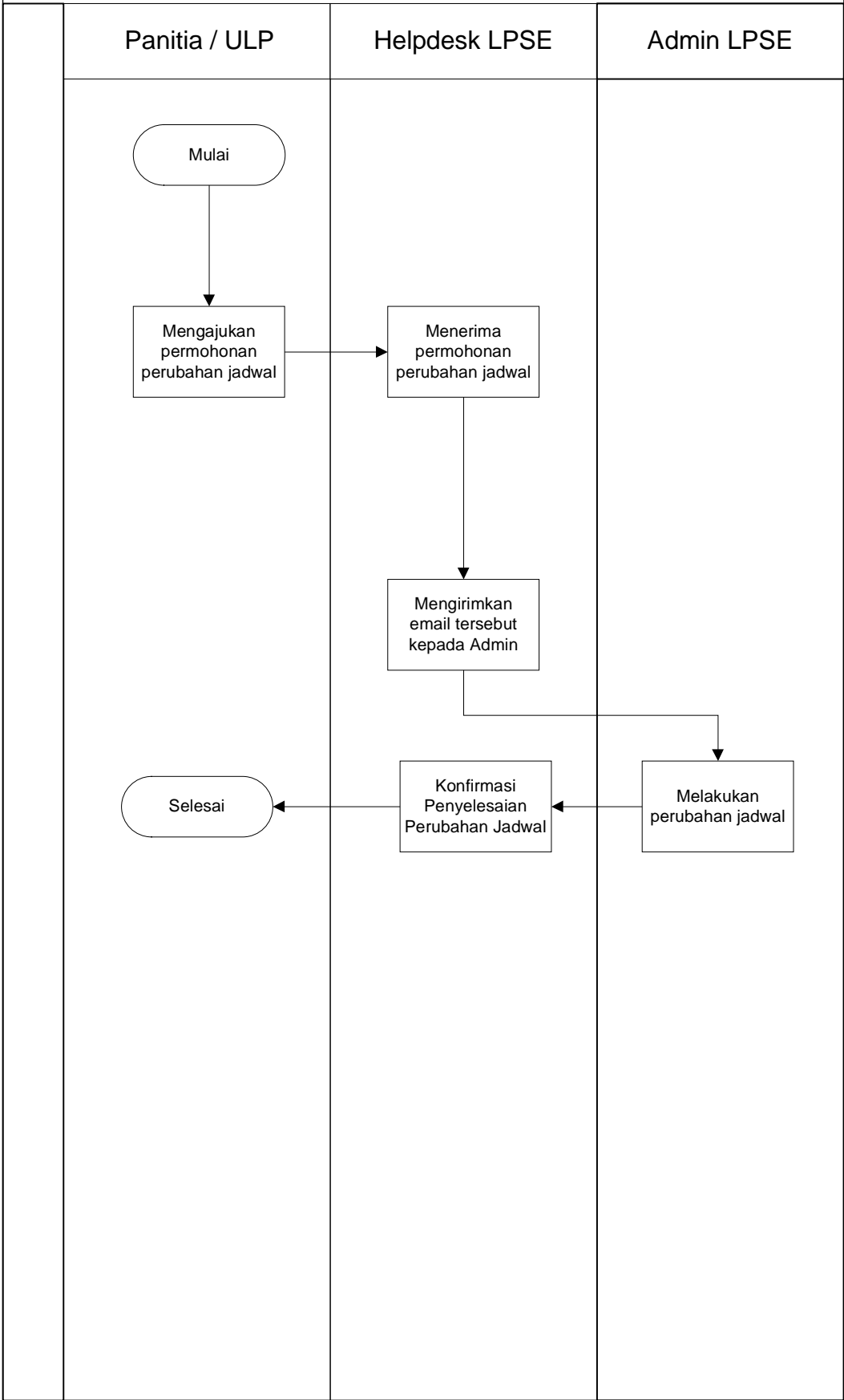


Ketua Tim Pengelola LPSE

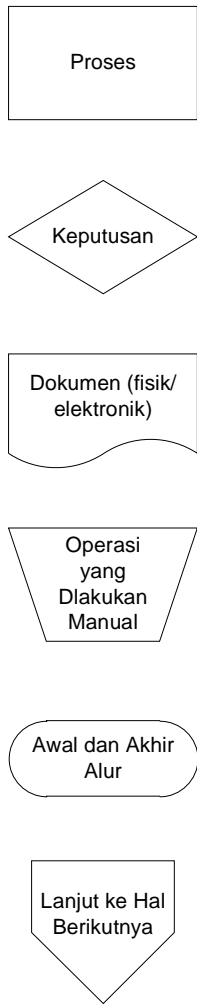
ttd

Kinanto, S.IP
NIP. 19650415 198702 1 003

Ubah Jadwal Pelelangan



Keterangan :



Syarat Usulan Perubahan Jadwal :

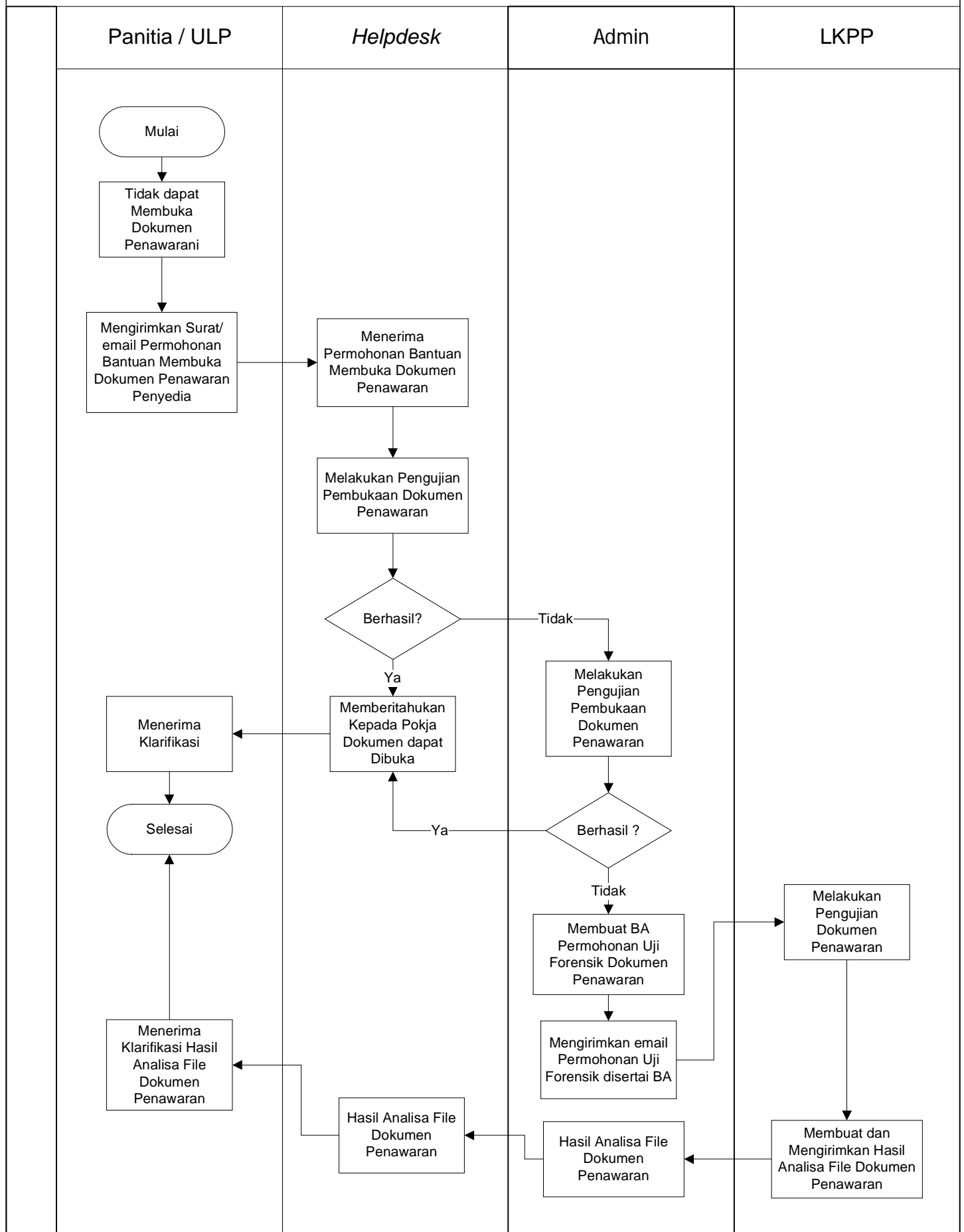
Dilengkapi Kode Lelang,
 Nama Lelang,
 Tahap yang akan diubah,
 Jadwal semula, jadwal menjadi
 dan
 user id & password panitia

Ketua Tim Pengelola LPSE

ttd

Kinanto, S.IP
 NIP. 19650415 198702 1 003

Penanganan Dokumen Penawaran yang Tidak Dapat Dibuka

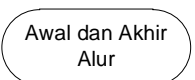
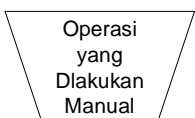
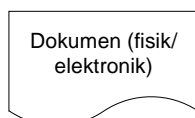
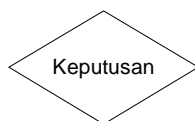
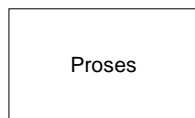


Ketua Tim Pengelola LPSE

ttd

Kinanto, S.IP
NIP. 19650415 198702 1 003

Keterangan :



Syarat Uji Forensik :

Dilengkapi ID Lelang, Nama Lelang, Ukuran File, Hash Key File pada Server dan Kunci Private Dokumen serta User ID dan Password Pokja